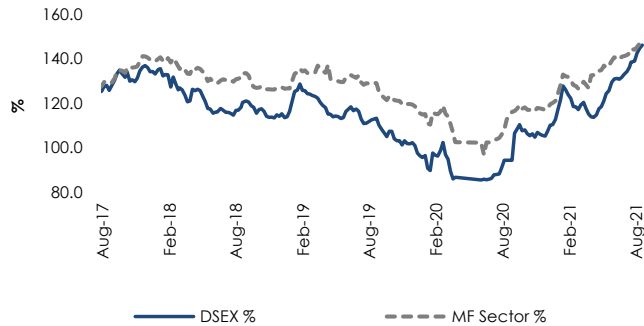


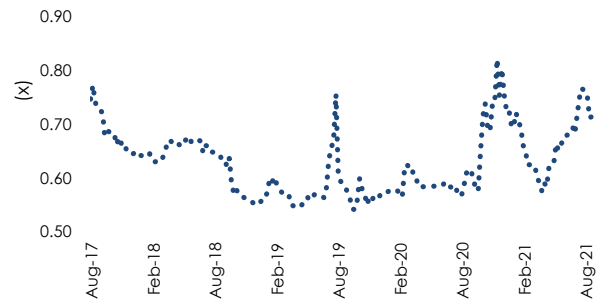
Mutual Fund Sector Matrix | Trading at 28.5% Discount (Last Week: 28.8% Discount)

Compared to last week, price to NAV (P/NAV) of the mutual fund remained unchanged and stood at 0.71x this week. Weekly return of DSEX stood at 0.9%, while YTD return of DSEX stood at 25.1%. Among the nine fund managers with closed end funds, ICB AMCL had the highest YTD NAV return (34.1%). First Bangladesh Fixed Income Fund (Fund Manager: RACE) was traded at highest discount (45.4%), whereas CAPM IBBL Islamic Mutual Fund (Fund Manager: CAPM) was traded at highest price to NAV (152.3%). In last 52 weeks, Prime Finance First Mutual Fund (Fund Manager: ICB AMCL) outperformed the market 31 times. CAPM BDBL Mutual Fund had the highest Sharpe ratio.

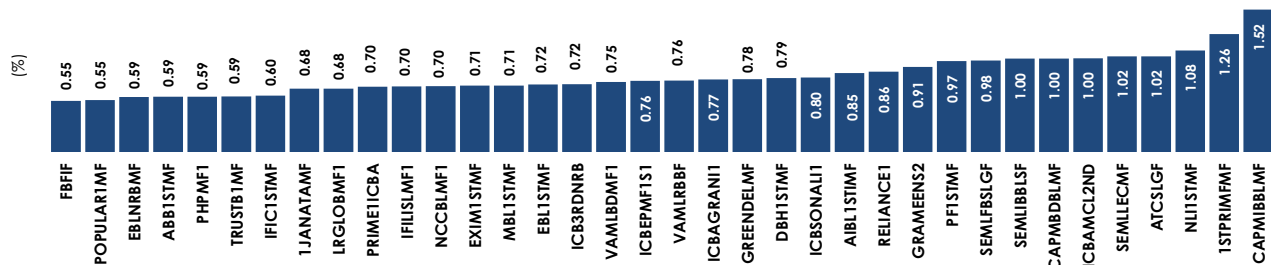
Mutual Fund Sector Performance Relative to DSEX (2016 = 100)



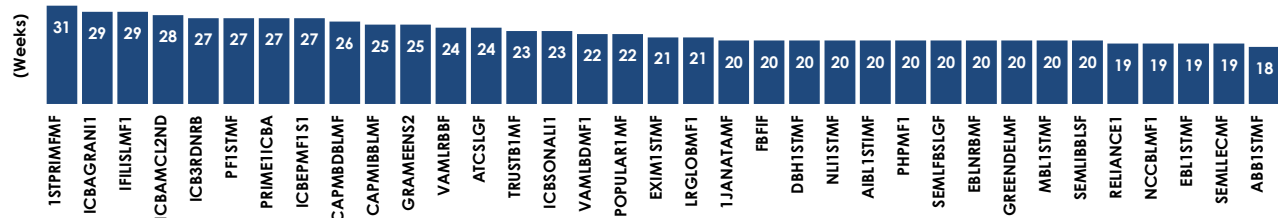
P/NAV - Mutual fund Sector

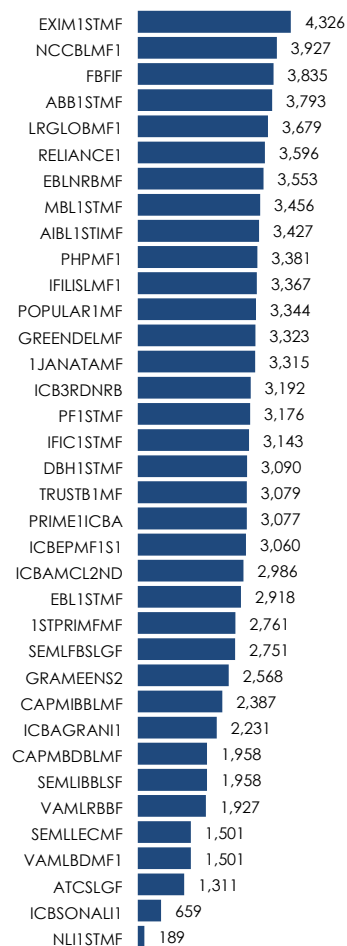


Fund's Trading at Lowest to Highest P/NAV

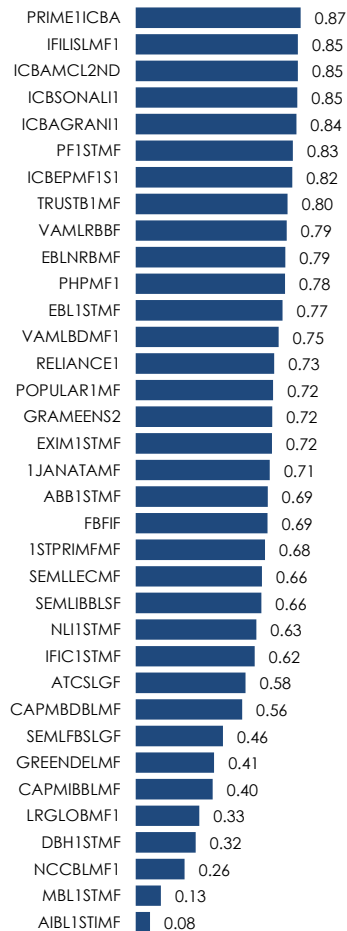
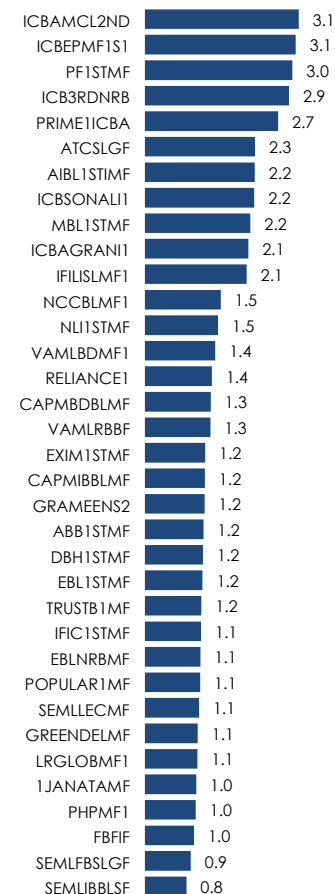


Number of weeks Mutual Funds have outperformed the market in the last 52 weeks



Proximity to Redemption


(Days)

R-squared

Standard Deviation


(%)

Asset Managers' Statistics

#	Fund Manager	No. of Funds	AUM* (BDT mn)	AUM (USD mn)	Mkt Cap (BDT mn)	Mkt Cap (USD mn)	Price to NAV (x)	Premium/Discount (%)	Dividend Yield (%)	YTD NAV Return (%)	YTD DSEX Return (%)
1	ICB AMCL	9	7,888	93	6,322	75	0.80	(19.9)	7.3	34.1	25.1
2	CAPM	2	1,563	18	2,031	24	1.30	29.9	7.7	25.7	25.1
3	VAML	2	3,337	39	2,525	30	0.76	(24.3)	2.2	18.9	25.1
4	AIMS	2	4,922	58	4,428	52	0.90	(10.0)	2.9	17.3	25.1
5	VIPB	1	798	9	866	10	1.08	8.5	10.2	15.5	25.1
6	ASIAN TIGER	1	804	9	822	10	1.02	2.2	11.3	14.9	25.1
7	RACE	10	35,388	417	21,123	249	0.60	(40.3)	-	14.0	25.1
8	SEML	3	2,720	32	2,712	32	1.00	(0.3)	7.1	12.6	25.1
9	LR GLOBAL	6	10,912	129	8,009	94	0.73	(26.6)	9.5	6.7	25.1
Total		36	68,334	806	48,837	576	0.71	(28.5)	4.0	15.4	25.1

* Asset Under Management ** Ranking based on YTD NAV return

Ranking Based on Different Performance Parameters

Rank	Ticker	NAV Return (%)
1	1STPRIMFMF	3.6
2	PRIME1ICBA	2.7
3	ICBAMCL2ND	2.7
4	ICB3RDNRB	2.3
5	ICBSONALI1	2.2
6	IFILISLMF1	2.1
7	PF1STMF	1.9
8	ICBEPMF1S1	1.8
9	ICBAGRANI1	1.5
10	EBL1STMF	0.8

Rank	Ticker	YTD NAV Return (%)
1	ICBEPMF1S1	41.4
2	PF1STMF	40.8
3	1STPRIMFMF	39.8
4	PRIME1ICBA	38.1
5	ICBAMCL2ND	37.8
6	ICB3RDNRB	37.4
7	ICBSONALI1	31.1
8	IFILISLMF1	28.0
9	CAPMBDBLMF	27.1
10	ICBAGRANI1	25.3

Rank	Ticker	Excess Return (%)
1	1STPRIMFMF	1.1
2	PRIME1ICBA	0.2
3	ICBAMCL2ND	0.1
4	EBL1STMF	(0.1)
5	VAMLRBBF	(0.2)
6	VAMLBDMF1	(0.2)
7	ICB3RDNRB	(0.2)
8	TRUSTB1MF	(0.4)
9	ICBSONALI1	(0.4)
10	RELIANCE1	(0.4)

Rank	Ticker	Dividend Yield (%)
1	MBL1STMF	13.86
2	AIBL1STMF	13.03
3	GREENDELMF	12.63
4	DBH1STMF	12.37
5	SEMLLECMF	11.90
6	ATCSLGF	11.28
7	NLI1STMF	10.17
8	CAPMBDBLMF	9.77
9	ICB3RDNRB	9.21
10	PRIME1ICBA	9.15

Rank	Ticker	Sharpe Ratio
1	CAPMBDBLMF	0.50
2	CAPMIBBLMF	0.47
3	LRGLOBMF1	0.45
4	GRAMEENS2	0.41
5	GREENDELMF	0.41
6	VAMLBDMF1	0.40
7	VAMLRBBF	0.40
8	DBH1STMF	0.38
9	SEMLLECMF	0.37
10	RELIANCE1	0.37

Rank	Ticker	Treynor Ratio
1	LRGLOBMF1	1.35
2	CAPMIBBLMF	1.28
3	CAPMBDBLMF	1.17
4	DBH1STMF	1.16
5	AIBL1STMF	1.14
6	MBL1STMF	1.11
7	GREENDELMF	1.09
8	NCCBLMF1	0.97
9	SEMLFBSLGF	0.92
10	1JANATAMF	0.90

Rank	Ticker	Tracking Error (%)
1	IFILISLMF1	0.80
2	VAMLRBBF	0.82
3	ICBAGRANI1	0.83
4	VAMLBDMF1	0.87
5	ICBSONALI1	0.87
6	TRUSTB1MF	0.87
7	EBL1STMF	0.90
8	EBLNRBMF	0.90
9	RELIANCE1	0.91
10	PHPMF1	0.95

Rank	Ticker	M-squared (%)
1	CAPMBDBLMF	0.90
2	CAPMIBBLMF	0.85
3	LRGLOBMF1	0.81
4	GRAMEENS2	0.75
5	GREENDELMF	0.73
6	VAMLBDMF1	0.73
7	IFILISLMF1	0.73
8	VAMLRBBF	0.73
9	1STPRIMFMF	0.72
10	PRIME1ICBA	0.71

Rank	Ticker	Alpha (%)
1	CAPMBDBLMF	0.30
2	CAPMIBBLMF	0.28
3	LRGLOBMF1	0.25
4	MBL1STMF	0.21
5	DBH1STMF	0.20
6	GREENDELMF	0.18
7	AIBL1STMF	0.18
8	1STPRIMFMF	0.17
9	NCCBLMF1	0.15
10	GRAMEENS2	0.12

Closed End Fund's Statistics

#	Ticker	Year End	No. of Units (mn)	Paid-up capital (BDT mn)	AUM (BDT mn)	Market Cap (BDT mn)	NAV at Cost (BDT)	NAV at Market (BDT)	NAV at Begin (BDT)	YTD NAV Return (%)	Div. Yield (%)	YTD NAV Total return (%)
ICB AMCL												
1	ICB3RDNRB	Jun	100	1,000	1,035	750	12.1	10.4	7.5	37.4	9.2	46.7
2	ICBAMCL2ND	Jun	50	500	584	585	14.0	11.7	8.5	37.8	7.2	47.3
3	ICBEPMF1S1	Jun	75	750	790	600	12.3	10.5	7.4	41.4	7.4	49.5
4	ICBSONALI1	Jun	100	1,000	1,157	920	12.0	11.6	8.8	31.1	7.7	39.0
5	IFILISLMF1	Jun	100	1,000	1,028	720	11.2	10.3	8.0	28.0	5.7	32.9
6	PF1STMF	Jun	60	600	649	630	12.3	10.8	7.7	40.8	5.8	48.6
7	PRIME1ICBA	Jun	100	1,000	1,134	790	12.4	11.3	8.2	38.1	9.1	47.2
8	ICBAGRANI1	Jun	98	982	1,191	923	11.7	12.1	9.7	25.3	7.5	32.5
9	1STPRIMFMF	Dec	20	200	321	404	18.6	16.0	11.5	39.8	3.8	46.8
RACE												
10	1JANATAMF	Jun	290	2,899	3,602	2,435	11.9	12.4	10.7	15.9	-	15.9
11	ABB1STMF	Jun	239	2,391	2,962	1,745	11.7	12.4	11.0	13.0	-	13.0
12	EBL1STMF	Jun	145	1,448	1,764	1,274	12.1	12.2	10.7	14.1	-	14.1
13	EBLNRBMF	Jun	224	2,243	2,861	1,682	11.1	12.8	10.9	16.8	-	16.8
14	EXIM1STMF	Jun	143	1,433	1,776	1,261	11.4	12.4	10.8	15.2	-	15.2
15	FBFIF	Jun	776	7,761	9,390	5,123	11.1	12.1	10.6	13.7	-	13.7
16	IFIC1STMF	Jun	182	1,822	2,151	1,293	11.2	11.8	10.6	11.3	-	11.3
17	TRUST1MF	Jun	304	3,036	3,778	2,247	11.6	12.4	11.1	12.5	-	12.5
18	PHPMF1	Jun	282	2,819	3,439	2,030	11.2	12.2	10.7	13.6	-	13.6
19	POPULAR1MF	Jun	299	2,991	3,666	2,034	11.5	12.3	10.8	14.0	-	14.0
LR GLOBAL												
20	AIBL1STMF	Mar	100	1,000	1,112	940	10.1	11.1	11.5	(3.2)	13.0	7.5
21	MBL1STMF	Mar	100	1,000	1,168	830	10.2	11.7	11.6	0.8	13.9	10.7
22	DBH1STMF	Jun	120	1,200	1,472	1,164	11.3	12.3	11.3	8.2	12.4	18.8
23	GREENDELMF	Jun	150	1,500	1,830	1,425	11.3	12.2	11.2	9.4	12.6	20.2
24	LRGLOBMF1	Sep	311	3,111	3,989	2,706	11.5	12.8	11.6	10.6	4.6	14.0
25	NCCBLMF1	Dec	109	1,085	1,340	944	10.6	12.4	11.8	4.6	8.3	10.7
SEML												
26	SEMLLECMF	Jun	50	500	617	630	12.7	12.3	10.7	15.5	11.9	29.5
27	SEMLIBLSF	Jun	100	1,000	1,171	1,170	11.9	11.7	10.6	10.8	8.5	20.3
28	SEMLFBSLGF	Jun	73	729	932	912	12.3	12.8	11.3	12.9	2.0	15.1
AIMS												
29	GRAMEENS2	Jun	182	1,824	3,991	3,630	11.8	21.9	18.7	17.0	3.5	20.8
30	RELIANCE1	Jun	61	605	931	799	11.8	15.4	13.0	18.4	-	18.4
CAPM												
31	CAPMBDBLMF	Jun	50	501	667	667	12.0	13.3	10.5	27.1	9.8	39.5
32	CAPMIBBLMF	Jun	67	669	896	1,364	11.8	13.4	10.8	24.6	6.6	37.1
VAML												
33	VAMLBDMF1	Sep	104	1,043	1,423	1,064	12.2	13.6	11.4	19.2	2.9	21.8
34	VAMLRBBF	Dec	159	1,587	1,914	1,460	11.5	12.1	10.2	18.6	1.7	20.2
ASIAN TIGER												
35	ATCSLGF	Jun	62	618	804	822	12.2	13.0	11.3	14.9	11.3	28.2
VIPB												
36	NLI1STMF	Jun	50	503	798	866	13.9	15.9	13.7	15.5	10.2	28.2

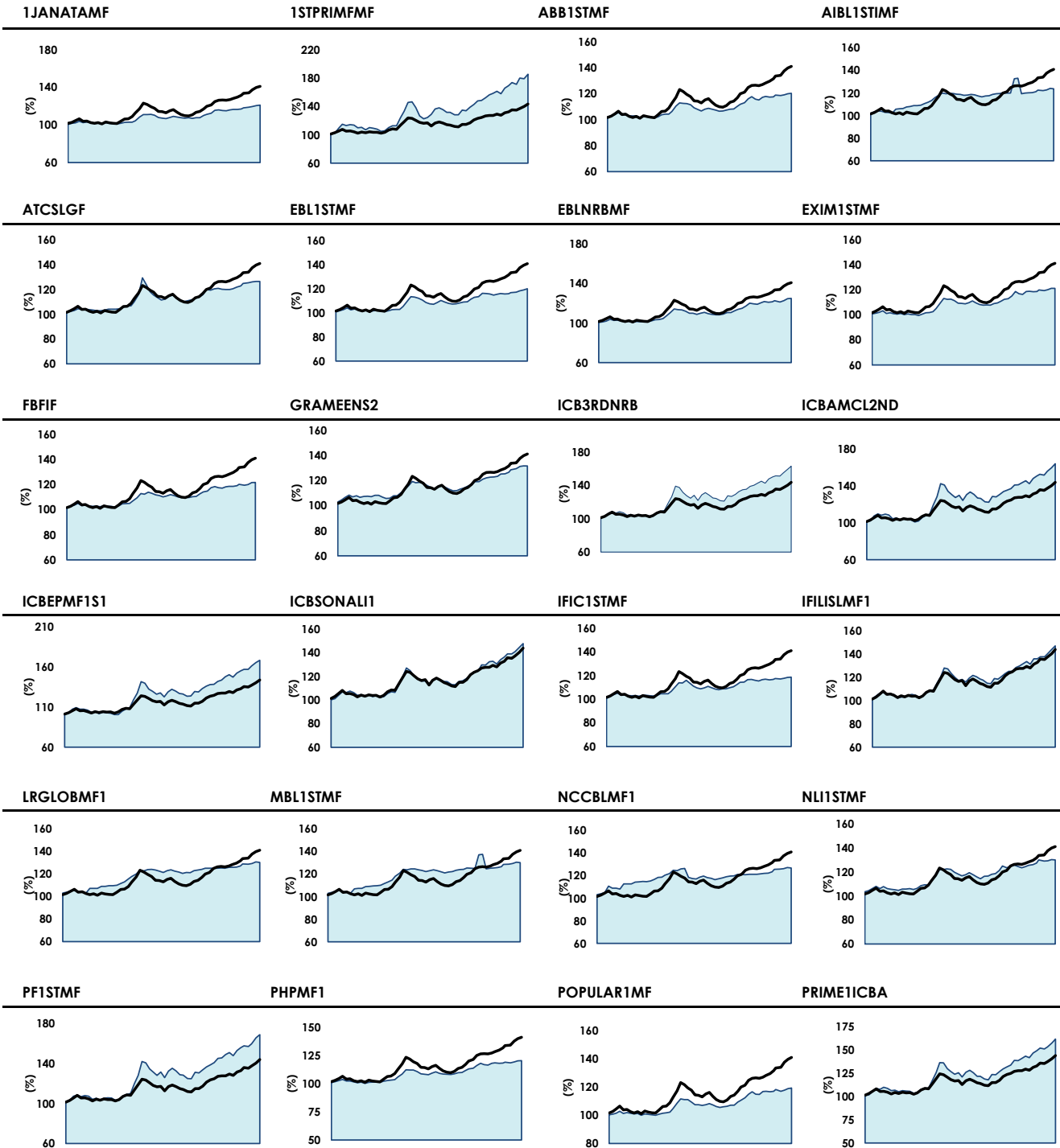
Closed End Fund's Statistics

#	Ticker	Cash Div (%) FY21	Cash Div (%) FY20	Cash Div (%) FY19	Beta	Sharpe Ratio	Treynor Ratio	Information Ratio (%)	Alpha (%)	52-week total return (%)	Initial Trading Date	Redemption Date	
ICB AMCL													
1	ICB3RDNRB	7.0	5.0	4.0	●	1.38	0.33	0.69	0.76	-0.04	63.2	24/May/10	19/May/30
2	ICBAMCL2ND	8.0	5.0	6.0	●	1.46	0.31	0.67	0.66	-0.08	63.9	28/Oct/09	25/Oct/29
3	ICBEPMF1S1	6.0	5.0	4.5	●	1.40	0.33	0.73	0.69	0.01	68.4	18/Jan/10	07/Jan/30
4	ICBSONALI1	7.0	5.0	6.0	●	1.03	0.33	0.72	0.89	0.00	47.6	12/Jun/13	12/Jun/23
5	IFILISLMF1	4.0	4.0	6.0	●	0.96	0.35	0.76	0.95	0.04	46.9	22/Nov/10	10/Nov/30
6	PF1STMF	6.0	5.0	5.0	●	1.38	0.34	0.74	0.72	0.03	68.6	09/May/10	03/May/30
7	PRIME1ICBA	7.5	5.0	6.0	●	1.27	0.34	0.73	0.85	0.10	61.5	02/Feb/10	24/Jan/30
8	ICBAGRANI1	7.0	5.0	5.0	●	0.97	0.33	0.71	0.06	0.08	44.1	08/Oct/17	01/Oct/27
9	1STPRIMFMF	-	8.0	7.0	●	1.48	0.34	0.83	0.56	0.17	86.0	17/Mar/09	14/Mar/29
RACE													
10	1JANATAMF	-	-	3.0	●	0.38	0.33	0.90	(0.30)	0.02	21.1	20/Sep/10	19/Sep/30
11	ABB1STMF	-	-	3.0	●	0.57	0.28	0.58	(0.32)	-0.04	20.3	29/Jan/12	10/Jan/32
12	EBL1STMF	-	-	3.0	●	0.60	0.28	0.55	(0.35)	-0.06	20.2	19/Aug/09	18/Aug/29
13	EBLNRBMF	-	-	3.0	●	0.58	0.36	0.70	(0.27)	0.03	25.1	23/May/11	15/May/31
14	EXIM1STMF	-	-	3.5	●	0.60	0.28	0.57	(0.32)	-0.04	21.0	16/Jul/13	26/Jun/33
15	FBFIF	-	-	3.0	●	0.48	0.35	0.73	(0.28)	0.04	21.7	19/Mar/12	21/Feb/32
16	IFIC1STMF	-	-	3.0	●	0.52	0.27	0.58	(0.32)	-0.03	18.6	01/Apr/10	31/Mar/30
17	TRUSTB1MF	-	-	3.5	●	0.59	0.30	0.58	(0.35)	-0.04	21.0	27/Jan/10	26/Jan/30
18	PHPMF1	-	-	3.0	●	0.53	0.32	0.63	(0.33)	-0.01	20.3	29/Nov/10	24/Nov/30
19	POPULAR1MF	-	-	3.0	●	0.55	0.28	0.57	(0.34)	-0.04	19.3	19/Oct/10	18/Oct/30
LR GLOBAL													
20	AIBL1STMF	12.3	-	8.0	●	0.36	0.18	1.14	(0.10)	0.18	23.8	10/Jan/11	09/Jan/31
21	MBL1STMF	11.5	-	8.0	●	0.45	0.23	1.11	(0.07)	0.21	30.1	08/Feb/11	07/Feb/31
22	DBH1STMF	12.0	-	8.0	●	0.39	0.38	1.16	(0.14)	0.20	27.6	07/Feb/10	06/Feb/30
23	GREENDELMF	12.0	-	8.0	●	0.40	0.41	1.09	(0.16)	0.18	27.1	28/Sep/10	27/Sep/30
24	LRGLOBMF1	-	4.0	4.0	●	0.36	0.45	1.35	(0.12)	0.25	30.2	19/Sep/11	18/Sep/31
25	NCCBLMF1	-	7.3	6.0	●	0.45	0.28	0.97	(0.13)	0.15	26.9	24/May/12	23/May/32
SEML													
26	SEMLLECMF	15.0	-	5.0	●	0.52	0.37	0.79	(0.23)	0.07	25.1	14/Jan/16	01/Oct/25
27	SEMLIBLSF	10.0	-	5.0	●	0.40	0.34	0.72	(0.31)	0.03	17.7	12/Feb/17	01/Jan/27
28	SEMLFBSLGF	-	2.5	5.0	●	0.37	0.36	0.92	(0.24)	0.10	20.7	04/Mar/19	04/Mar/29
AIMS													
29	GRAMEENS2	-	7.0	9.0	●	0.59	0.41	0.85	(0.15)	0.12	31.4	02/Sep/08	02/Sep/28
30	RELIANCE1	-	-	10.0	●	0.67	0.37	0.75	(0.16)	0.07	31.2	07/Jul/11	27/Jun/31
CAPM													
31	CAPMBDBLMF	13.0	-	5.0	●	0.58	0.50	1.17	0.02	0.30	43.4	12/Jan/17	01/Jan/27
32	CAPMIBBLMF	13.5	-	8.0	●	0.45	0.47	1.28	(0.05)	0.28	36.4	05/Mar/18	05/Mar/28
VAML													
33	VAMLBDMF1	-	3.0	0.0	●	0.72	0.40	0.81	(0.08)	0.12	36.6	17/Jan/16	01/Oct/25
34	VAMLRBBF	-	1.6	5.0	●	0.69	0.40	0.79	(0.13)	0.09	33.8	05/Dec/16	01/Dec/26
ASIAN TIGER													
35	ATCSLGF	15.0	-	7.5	●	0.99	0.20	0.45	(0.14)	-0.19	26.5	31/Mar/15	25/Mar/25
VIPB													
36	NLI1STMF	17.5	5.0	13.0	●	0.69	0.32	0.71	(0.15)	0.04	29.9	27/Feb/12	27/Feb/22

Closed End Fund's Statistics

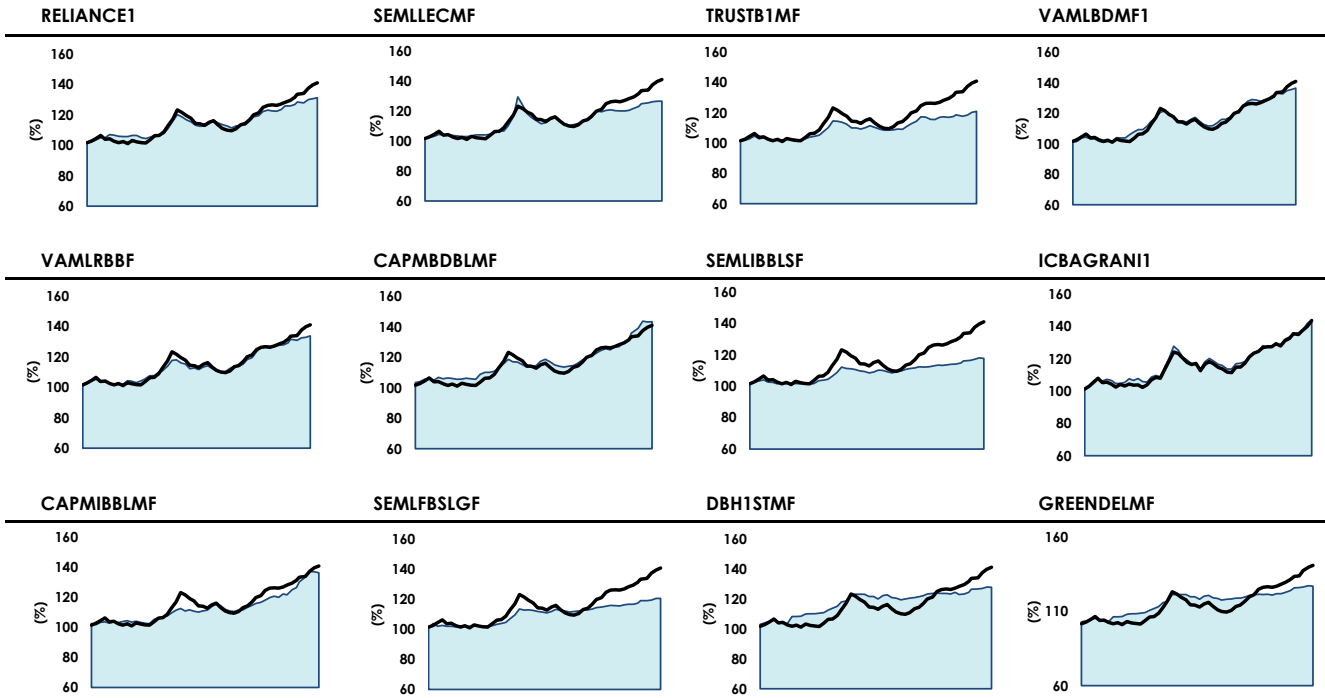
#	Ticker	Share Holding as on	Sponsor/ Director holding (%)	Govt. Holding (%)	Institutional holding (%)	Foreign holding (%)	Public holding (%)	Free float (%)
ICB AMCL								
1	ICB3RDNRB	30-Jul-21	10.0	0.0	43.5	0.1	46.4	90.0
2	ICBAMCL2ND	30-Jul-21	0.0	0.0	54.6	0.0	45.4	100.0
3	ICBEPMF1S1	30-Jul-21	10.0	0.0	35.9	0.0	54.2	90.0
4	ICBSONALI1	30-Jul-21	25.0	0.0	66.4	0.0	8.6	75.0
5	IFLISLMF1	30-Jul-21	1.0	0.0	58.4	0.0	40.6	99.0
6	PF1STMF	30-Jul-21	33.3	0.0	13.7	0.1	52.9	66.7
7	PRIME1ICBA	30-Jul-21	20.0	0.0	56.1	0.0	23.9	80.0
8	ICBAGRANI1	30-Jul-21	50.9	0.0	38.5	0.0	10.6	49.1
9	1STPRIMFMF	30-Jul-21	2.0	0.0	20.1	0.0	77.9	98.0
RACE								
10	1JANATAMF	30-Jul-21	25.0	0.0	48.9	0.0	26.1	75.0
11	ABB1STMF	30-Jul-21	17.6	0.0	27.6	0.0	54.8	82.4
12	EBL1STMF	30-Jul-21	1.4	0.0	65.9	0.0	32.7	98.6
13	EBLNRBMF	30-Jul-21	8.9	0.0	61.4	0.0	29.7	91.1
14	EXIM1STMF	30-Jul-21	22.0	0.0	35.0	0.0	43.0	78.0
15	FBFIF	30-Jul-21	54.0	0.0	29.5	0.0	16.5	46.0
16	IFIC1STMF	30-Jul-21	20.8	0.0	32.8	0.0	46.4	79.2
17	TRUSTB1MF	30-Jul-21	1.5	0.0	42.6	0.0	55.9	98.5
18	PHPMF1	30-Jul-21	10.3	0.0	60.9	0.0	28.9	89.7
19	POPULAR1MF	30-Jul-21	10.0	0.0	38.6	0.0	51.4	90.0
LR GLOBAL								
20	AIBL1STMF	30-Jul-21	10.0	0.0	52.3	0.0	37.7	90.0
21	MBL1STMF	30-Jul-21	10.0	0.0	59.1	5.8	25.1	90.0
22	DBH1STMF	30-Jul-21	16.7	0.0	37.7	11.3	34.4	83.3
23	GREENDELMF	30-Jul-21	8.3	0.0	71.8	3.1	16.7	91.7
24	LRGLOBMF1	30-Jul-21	15.1	0.0	66.0	6.3	12.7	84.9
25	NCCBLMF1	30-Jul-21	15.0	0.0	61.1	0.0	23.9	85.0
SEML								
26	SEMLLECMF	30-Jul-21	10.0	0.0	19.4	0.0	70.6	90.0
27	SEMLIBLSF	30-Jul-21	50.0	0.0	28.8	0.0	21.2	50.0
28	SEMLFBSLGF	30-Jul-21	14.4	0.0	41.4	0.0	44.2	85.6
AIMS								
29	GRAMEENS2	30-Jul-21	20.5	0.0	50.5	0.0	29.0	79.5
30	RELIANCE1	30-Jul-21	20.0	0.0	29.9	1.8	48.3	80.0
CAPM								
31	CAPMBDBLMF	30-Jul-21	20.0	0.0	29.5	0.0	50.6	80.1
32	CAPMIBBLMF	30-Jul-21	74.1	0.0	3.4	0.0	22.6	26.0
VAML								
33	VAMLBDMF1	30-Jul-21	8.2	0.0	78.5	0.8	12.7	91.9
34	VAMLRBBF	30-Jul-21	25.2	0.0	63.4	0.0	11.4	74.8
ASIAN TIGER								
35	ATCSLGF	30-Jul-21	27.3	0.0	32.5	0.0	40.2	72.7
VIPB								
36	NLI1STMF	30-Jul-21	32.8	0.0	32.9	0.0	34.3	67.2

Last 52 week Return performance (NAV at Market Return v DSEX)



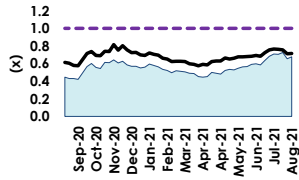
Mutual Fund
 DSEX

Last 52 week Return performance (NAV at Market Return v DSEX)



Last 52 week P/NAV

1JANATAMF



1STPRIMFMF

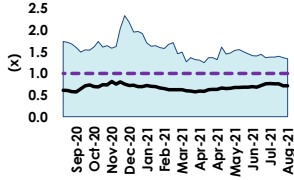
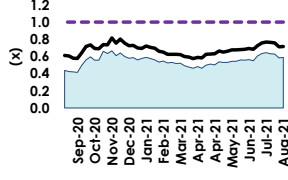
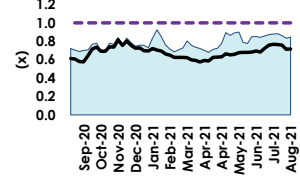


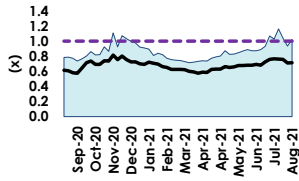
ABB1STMF



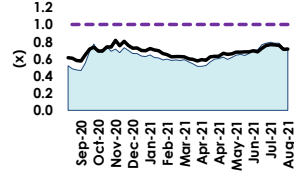
AIBL1STMF



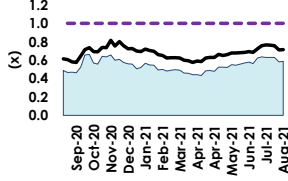
ATCSLGF



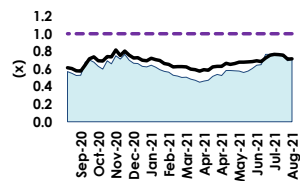
EBL1STMF



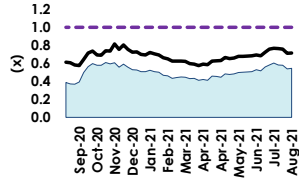
EBLNRBMF



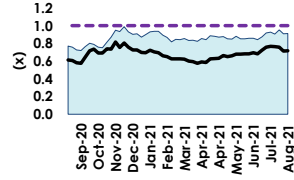
EXIM1STMF



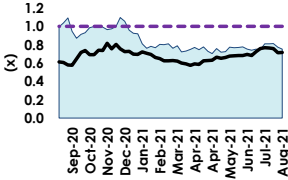
FBFIF



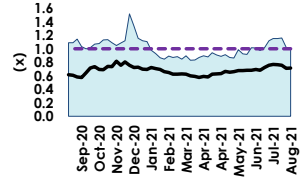
GRAMENS2



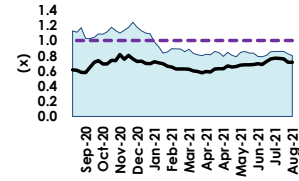
ICB3RDNRB



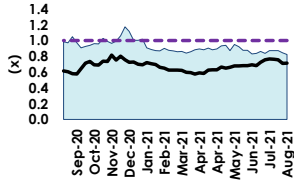
ICBAMCL2ND



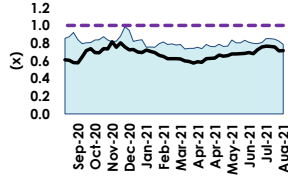
ICBPMF1S1



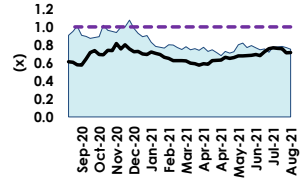
ICBSONALI1



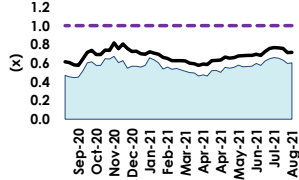
ICBAGRANI1



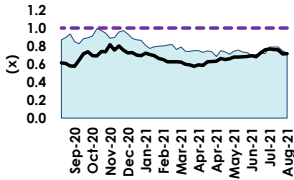
PRIME1ICBA



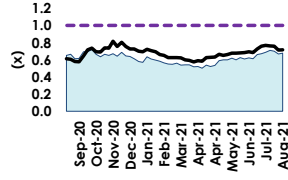
IFIC1STMF



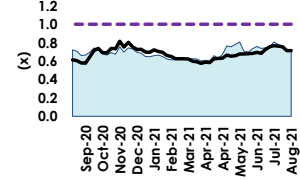
IFILISLMF1



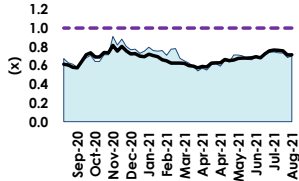
LRGLOBMF1



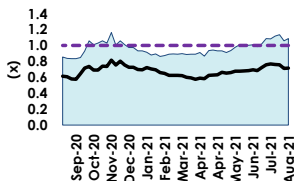
MBL1STMF



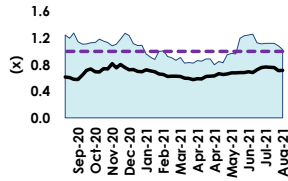
NCCBLMF1



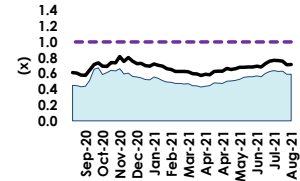
NLI1STMF



PF1STMF



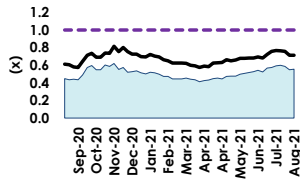
PHPMF1



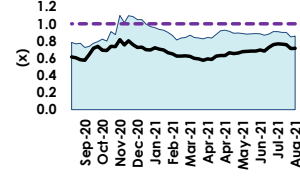
— Mutual Fund - - - Benchmark — Sector P/NAV

Last 52 week P/NAV

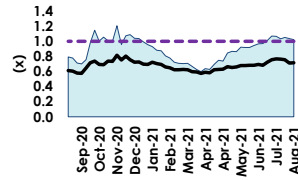
POPULAR1MF



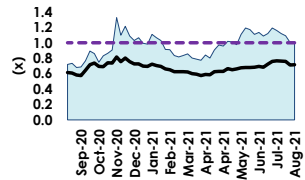
RELIANCE1



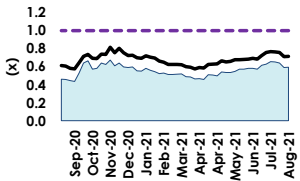
SEMLLECMF



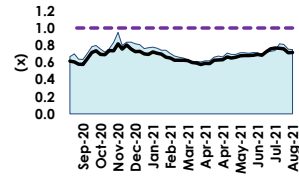
SEMLIBLSF



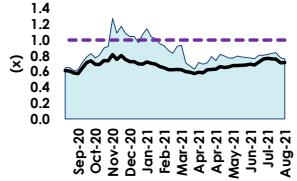
TRUSTB1MF



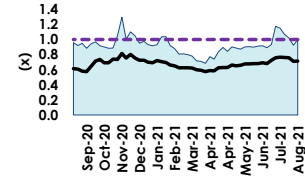
VAMLBDMF1



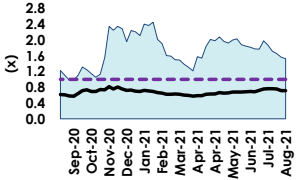
VAMLRBBF



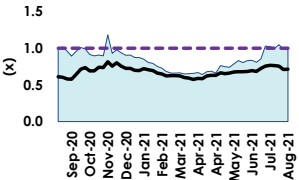
CAPMBDBLMF



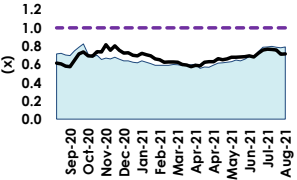
CAPMIBBLMF



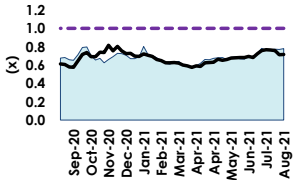
SEMLFBSLGF



DBH1STMF



GREENELMF



Top 5 scrips held by MFs based on market value
1JANATAMF

Ticker	Qty ('000)	Total Cost Price (mn)	Total Market Value (mn)	Cost Price Per Share	Market Price Per share	Weight (%)
RENATA	307	312.7	432.8	1,017.9	1,408.8	12.0
PREMIERBAN	10,720	104.6	158.7	9.8	14.8	4.4
ICB	1,286	179.3	155.8	139.4	121.1	4.3
BANKASIA	7,730	148.1	153.1	19.2	19.8	4.2
CITYBANK	4,794	123.4	134.7	25.7	28.1	3.7

1STPRIMFMF

Ticker	Qty ('000)	Total Cost Price (mn)	Total Market Value (mn)	Cost Price Per Share	Market Price Per share	Weight (%)
BEXIMCO	413	36.3	44.5	88.0	107.9	1.2
SUMITPOWER	578	26.7	27.1	46.2	46.8	0.8
ISLAMICFIN	511	12.5	14.7	24.6	28.8	0.4
SAIFPOWER	459	10.0	13.9	21.9	30.3	0.4
PDL	765	11.0	12.7	14.4	16.6	0.4

ABB1STMF

Ticker	Qty ('000)	Total Cost Price (mn)	Total Market Value (mn)	Cost Price Per Share	Market Price Per share	Weight (%)
GP	780	308.4	280.5	395.2	359.4	9.5
RENATA	178	157.4	251.2	882.8	1,408.8	8.5
SQURPHARMA	931	230.9	211.3	248.1	227.0	7.1
EBL	4,427	163.9	161.6	37.0	36.5	5.5
ICB	1,086	119.5	131.5	110.1	121.1	4.4

ABL1STMF

Ticker	Qty ('000)	Total Cost Price (mn)	Total Market Value (mn)	Cost Price Per Share	Market Price Per share	Weight (%)
BXPBARMA	626	57.6	119.7	92.1	191.2	10.8
RENATA	78	73.1	109.3	942.8	1,408.8	9.8
SQURPHARMA	443	71.1	100.6	160.5	227.0	9.0
GP	237	80.0	85.2	337.5	359.4	7.7
BATASHOE	56	65.7	38.3	1,167.1	681.5	3.4

ATCSLGF

Ticker	Qty ('000)	Total Cost Price (mn)	Total Market Value (mn)	Cost Price Per Share	Market Price Per share	Weight (%)
BATBC	87	28.5	49.1	327.1	563.6	6.1
GP	135	42.8	48.3	318.5	359.4	6.0
BRACBANK	900	38.4	43.2	42.6	48.0	5.4
SINGERBD	222	35.9	40.6	162.0	182.9	5.0
GREENDELMEF	4,184	32.4	39.7	7.7	9.5	4.9

EBL1STMF

Ticker	Qty ('000)	Total Cost Price (mn)	Total Market Value (mn)	Cost Price Per Share	Market Price Per share	Weight (%)
RENATA	85	79.5	119.1	940.3	1,408.8	6.8
EBL	2,561	79.5	93.5	31.1	36.5	5.3
GP	226	78.6	81.2	348.1	359.4	4.6
NBL	6,692	59.1	54.9	8.8	8.2	3.1
ICB	441	40.1	53.4	91.0	121.1	3.0

EBLNRBMF

Ticker	Qty ('000)	Total Cost Price (mn)	Total Market Value (mn)	Cost Price Per Share	Market Price Per share	Weight (%)
RENATA	238	243.4	335.0	1,023.5	1,408.8	11.7
DUTCHBANGL	2,100	133.9	174.5	63.8	83.1	6.1
ICB	982	102.3	118.9	104.2	121.1	4.2
ALARABANK	3,450	69.4	93.5	20.1	27.1	3.3
1JANATAMF	11,081	70.7	93.1	6.4	8.4	3.3

EXIM1STMF

Ticker	Qty ('000)	Total Cost Price (mn)	Total Market Value (mn)	Cost Price Per Share	Market Price Per share	Weight (%)
RENATA	155	146.4	218.3	944.9	1,408.8	12.3
LINDEBD	66	86.4	91.2	1,309.8	1,382.4	5.1
ICB	746	93.0	90.3	124.8	121.1	5.1
DUTCHBANGL	1,045	69.6	86.8	66.6	83.1	4.9
BANKASIA	3,482	68.2	69.0	19.6	19.8	3.9

FBFIF

Ticker	Qty ('000)	Total Cost Price (mn)	Total Market Value (mn)	Cost Price Per Share	Market Price Per share	Weight (%)
RENATA	849	854.8	1196.7	1,006.3	1,408.8	12.7
BANKASIA	31,380	569.5	621.3	18.1	19.8	6.6
SQURPHARMA	2,136	512.7	484.9	240.0	227.0	5.2
GP	988	365.7	355.1	370.1	359.4	3.8
DUTCHBANGL	3,082	197.8	256.1	64.2	83.1	2.7

GRAMENS2

Ticker	Qty ('000)	Total Cost Price (mn)	Total Market Value (mn)	Cost Price Per Share	Market Price Per share	Weight (%)
GP	1,400	99.4	503.2	71.0	359.4	12.6
UPGDCL	990	44.6	290.0	45.1	292.9	7.3
IBBLPBOND	263	257.6	267.9	978.8	1,018.0	6.7
BATBC	305	7.3	172.0	23.9	563.6	4.3
SQURPHARMA	700	36.6	158.9	52.3	227.0	4.0

Top 5 scrips held by MFs based on market value
PRIME1ICBA

Ticker	Qty ('000)	Total Cost Price (mn)	Total Market Value (mn)	Cost Price Per Share	Market Price Per share	Weight (%)
BEXIMCO	1,021	87.9	110.2	86.1	107.9	9.7
SUMITPOWER	1,128	57.6	52.8	51.0	46.8	4.7
POWERGRID	697	48.3	36.8	69.2	52.8	3.2
SQURPHARMA	153	36.2	34.8	236.4	227.0	3.1
NCCBANK	1,928	27.4	30.3	14.2	15.7	2.7

ICBAGRANI

Ticker	Qty ('000)	Total Cost Price (mn)	Total Market Value (mn)	Cost Price Per Share	Market Price Per share	Weight (%)
GRAMEENS2	4,150	69.7	171.6	16.8	19.9	6.9
SQURPHARMA	268	63.1	159.4	235.8	227.0	5.1
ACMELAB	600	67.7	157.1	112.9	91.5	4.6
BXPBARMA	250	20.8	138.9	83.4	191.2	4.0
BATBC	84	27.8	121.5	332.1	563.6	4.0

ICB3RDNRB

Ticker	Qty ('000)	Total Cost Price (mn)	Total Market Value (mn)	Cost Price Per Share	Market Price Per share	Weight (%)
BEXIMCO	1,083	101.7	116.9	93.9	107.9	11.3
BXPBARMA	289	25.7	55.3	88.9	191.2	5.3
SUMITPOWER	1,036	52.3	48.5	50.5	46.8	4.7
SQURPHARMA	154	33.1	35.0	215.0	227.0	3.4
ACMELAB	335	38.2	30.7	114.1	91.5	3.0

ICBAMCL2ND

Ticker	Qty ('000)	Total Cost Price (mn)	Total Market Value (mn)	Cost Price Per Share	Market Price Per share	Weight (%)
BEXIMCO	681	57.4	73.5	84.3	107.9	12.6
SUMITPOWER	700	33.5	32.8	47.8	46.8	5.6
ISLAMICFIN	841	22.3	24.2	26.5	28.8	4.2
BXPBARMA	105	9.9	20.1	94.4	191.2	3.4
BDFINANCE	304	7.9	17.6	25.9	57.7	3.0

ICBEPMF1S1

Ticker	Qty ('000)	Total Cost Price (mn)	Total Market Value (mn)	Cost Price Per Share	Market Price Per share	Weight (%)
BEXIMCO	728	62.5	78.5	85.8	107.9	9.9
SUMITPOWER	1,206	59.0	56.5	48.9	46.8	7.1
LHBL	607	55.2	43.7	90.9	71.9	5.5
SALAMCRST	1,179	52.5	38.9	44.5	33.0	4.9
MALEKSPIN	1,019	25.0	37.6	24.5	36.9	4.8

ICBSONALI1

Ticker	Qty ('000)	Total Cost Price (mn)	Total Market Value (mn)	Cost Price Per Share	Market Price Per share	Weight (%)
PIONEERINS	425	15.8	62.0	37.3	145.8	5.4
PHENIXINS	616	18.9	38.8	30.6	62.9	3.4
JAMUNAOIL	211	41.1	38.3	194.8	181.7	3.3
GRAMEENS2	1,845	30.8	36.7	16.7	19.9	3.2
MPETROLEUM	174	35.5	35.2	204.0	202.1	3.0

IFIC1STMF

Ticker	Qty ('000)	Total Cost Price (mn)	Total Market Value (mn)	Cost Price Per Share	Market Price Per share	Weight (%)
RENATA	161	166.3	226.7	1,033.2	1,408.8	10.5
DUTCHBANGL	2,419	154.2	201.0	63.8	83.1	9.3
GP	357	129.9	128.4	363.5	359.4	6.0
BRACBANK	1,495	94.1	71.8	62.9	48.0	3.3
IJANATAMF	8,459	54.6	71.1	6.5	8.4	3.3

IFIL1STMF

Ticker	Qty ('000)	Total Cost Price (mn)	Total Market Value (mn)	Cost Price Per Share	Market Price Per share	Weight (%)
IBBLPBOND	80	76.9	81.4	961.6	1,018.0	7.9
BEXIMCO	717	60.7	77.4	84.7	107.9	7.5
SUMITPOWER	1,525	69.8	71.4	45.8	46.8	6.9
ISLAMICFIN	2,195	65.9	63.2	30.0	28.8	6.1
SQURPHARMA	255	61.4	57.8	240.8	227.0	5.6

IRGLOBMF1

Ticker	Qty ('000)	Total Cost Price (mn)	Total Market Value (mn)	Cost Price Per Share	Market Price Per share	Weight (%)
BXPBARMA	2,145	192.1	410.1	89.5	191.2	10.3
RENATA	258	195.8	363.9	757.9	1,408.8	9.1
SQURPHARMA	1,420	224.7	322.3	158.3	227.0	8.1
GP	720	223.0	258.9	309.5	359.4	6.5
BATASHOE	177	210.3	120.7	1,187.7	681.5	3.0

MBL1STMF

Ticker	Qty ('000)	Total Cost Price (mn)	Total Market Value (mn)	Cost Price Per Share	Market Price Per share	Weight (%)
BXPBARMA	615	63.9	117.5	104.0	191.2	10.1
RENATA	76	66.7	106.4	882.9	1,408.8	9.1
GREENELMF	10,651	98.8	101.2	9.3	9.5	8.7
SQURPHARMA	442	71.0	100.4	160.6	227.0	8.6
GP	234	68.6	84.0	293.7	359.4	7.2

Top 5 scrips held by MFs based on market value
NCCBLMF1

Ticker	Qty ('000)	Total Cost Price (mn)	Total Market Value (mn)	Cost Price Per Share	Market Price Per share	Weight (%)
BXPBARMA	665	59.6	127.2	89.6	191.2	9.5
RENATA	84	63.1	118.2	751.6	1,408.8	8.8
SQURPHARMA	483	74.0	109.6	153.3	227.0	8.2
NCCBLMF1	11,983	104.1	104.2	8.7	8.7	7.8
GP	254	69.6	91.3	273.8	359.4	6.8

PF1STMF

Ticker	Qty ('000)	Total Cost Price (mn)	Total Market Value (mn)	Cost Price Per Share	Market Price Per share	Weight (%)
BEXIMCO	757	69.9	81.7	92.3	107.9	12.6
SUMITPOWER	614	30.4	28.7	49.5	46.8	4.4
ISLAMICFIN	909	23.1	26.2	25.4	28.8	4.0
ACMELAB	217	24.8	19.9	114.2	91.5	3.1
NCCBANK	1,194	18.3	18.8	15.3	15.7	2.9

POPULAR1MF

Ticker	Qty ('000)	Total Cost Price (mn)	Total Market Value (mn)	Cost Price Per Share	Market Price Per share	Weight (%)
RENATA	257	228.2	362.5	887.1	1,408.8	9.9
ICB	1,586	225.3	192.0	142.0	121.1	5.2
NCCBANK	6,809	95.1	106.9	14.0	15.7	2.9
NBL	11,415	97.6	93.6	8.6	8.2	2.6
ONEBANKLTD	6,543	100.1	91.6	15.3	14.0	2.5

SEMLLECMF

Ticker	Qty ('000)	Total Cost Price (mn)	Total Market Value (mn)	Cost Price Per Share	Market Price Per share	Weight (%)
SQURPHARMA	218	54.4	49.5	249.3	227.0	8.0
GP	108	41.4	38.7	384.3	359.4	6.3
RENATA	20	15.2	27.5	778.0	1,408.8	4.5
HEIDELBCEM	58	31.1	19.0	534.4	326.8	3.1
SUMITPOWER	360	15.5	16.8	42.9	46.8	2.7

VAMLRBBF

Ticker	Qty ('000)	Total Cost Price (mn)	Total Market Value (mn)	Cost Price Per Share	Market Price Per share	Weight (%)
SQURPHARMA	756	174.7	171.5	231.2	227.0	18.4
GREENDELTA	1,155	60.1	132.2	52.0	114.5	14.2
CITYBANK	4,595	137.0	129.1	29.8	28.1	13.9
BEXIMCO	1,100	31.2	118.7	28.3	107.9	12.7
BXPBARMA	600	63.0	114.7	105.1	191.2	12.3

NLI1STMF

Ticker	Qty ('000)	Total Cost Price (mn)	Total Market Value (mn)	Cost Price Per Share	Market Price Per share	Weight (%)
BATBC	172	58.0	97.1	337.1	563.6	12.2
GREENDELTA	7,784	46.5	74.0	6.0	9.5	9.3
BRACBANK	1,482	57.2	71.1	38.6	48.0	8.9
SQURPHARMA	307	57.7	69.6	188.1	227.0	8.7
GP	191	57.6	68.6	301.9	359.4	8.6

PHPMF1

Ticker	Qty ('000)	Total Cost Price (mn)	Total Market Value (mn)	Cost Price Per Share	Market Price Per share	Weight (%)
RENATA	294	274.8	414.7	933.5	1,408.8	12.1
EBL	4,071	137.1	148.6	33.7	36.5	4.3
BXPBARMA	666	85.3	127.4	128.0	191.2	3.7
BATBC	154	60.3	86.8	391.5	563.6	2.5
DUTCHBANGL	937	57.9	77.9	61.7	83.1	2.3

RELIANCE1

Ticker	Qty ('000)	Total Cost Price (mn)	Total Market Value (mn)	Cost Price Per Share	Market Price Per share	Weight (%)
IBBLPBOND	89	86.1	91.0	962.7	1,018.0	9.8
WALTONHIL	31	10.0	43.8	320.0	1,403.6	4.7
TITASGAS	900	42.0	36.5	46.6	40.6	3.9
UPGDCL	110	4.8	32.2	43.8	292.9	3.5
PHOENIXFIN	825	26.1	25.4	31.6	30.8	2.7

TRUSTB1MF

Ticker	Qty ('000)	Total Cost Price (mn)	Total Market Value (mn)	Cost Price Per Share	Market Price Per share	Weight (%)
RENATA	330	301.0	465.2	911.4	1,408.8	12.3
BANKASIA	9,218	180.8	182.5	19.6	19.8	4.8
DUTCHBANGL	1,928	121.4	160.2	63.0	83.1	4.2
BXPBARMA	650	83.6	124.3	128.6	191.2	3.3
1JANATAMF	14,406	95.7	121.0	6.6	8.4	3.2

VAMLBDMF1

Ticker	Qty ('000)	Total Cost Price (mn)	Total Market Value (mn)	Cost Price Per Share	Market Price Per share	Weight (%)
SQURPHARMA	473	108.0	107.5	228.1	227.0	7.6
BXPBARMA	500	52.8	95.6	105.6	191.2	6.7
GREENDELTA	814	45.0	93.2	55.2	114.5	6.6
ADNTEL	1,333	20.0	84.5	15.0	63.4	5.9
CITYBANK	2,650	76.0	74.5	28.7	28.1	5.2

Top 5 scrips held by MFs based on market value

CAPMIBBLMF

Ticker	Qty ('000)	Total Cost Price (mn)	Total Market Value (mn)	Cost Price Per Share	Market Price Per share	Weight (%)
MARICO	31	54.4	72.7	1,743.6	2,329.9	9.0
BEACONPHAR	350	26.0	71.1	74.2	203.2	8.8
BSCCL	280	37.6	51.2	134.3	182.8	6.4
RENATA	34	33.7	48.6	975.9	1,408.8	6.0
GP	113	42.1	40.5	373.6	359.4	5.0

CAPMBDBLMF

Ticker	Qty ('000)	Total Cost Price (mn)	Total Market Value (mn)	Cost Price Per Share	Market Price Per share	Weight (%)
MARICO	26	44.9	60.0	1,743.0	2,329.9	7.5
QUASEMIND	769	48.7	42.4	63.3	55.1	5.3
DOREENPWR	455	34.3	33.9	75.3	74.5	4.2
GP	90	34.3	32.4	380.4	359.4	4.0
BSCCL	170	22.5	31.1	132.1	182.8	3.9

SEMLIBLSF

Ticker	Qty ('000)	Total Cost Price (mn)	Total Market Value (mn)	Cost Price Per Share	Market Price Per share	Weight (%)
GP	267	103.0	96.1	384.9	359.4	8.6
SQURPHARMA	417	100.9	94.7	241.8	227.0	8.5
RENATA	58	54.8	81.1	952.1	1,408.8	7.3
IBBLPBOND	44	42.8	44.4	980.0	1,018.0	4.0
MJLBD	457	49.0	42.0	107.0	91.9	3.8

SEMLFBSLGF

Ticker	Qty ('000)	Total Cost Price (mn)	Total Market Value (mn)	Cost Price Per Share	Market Price Per share	Weight (%)
GP	111	43.2	39.7	390	359	4.5
SQURPHARMA	164	41.3	37.3	251	227	4.2
BATBC	51	18.8	28.9	365	564	3.3
RENATA	13	14.6	17.8	1,160	1,409	2.0
MARICO	5	9.0	11.8	1,772	2,330	1.3

GRENDELMF

Ticker	Qty ('000)	Total Cost Price (mn)	Total Market Value (mn)	Cost Price Per Share	Market Price Per share	Weight (%)
BXPHARMA	897	82	172	91	191	13.1
RENATA	113	84	159	741	1,409	12.1
BATBC	279	130	157	465	564	12.0
SQURPHARMA	612	108	139	176	227	10.6
GP	338	115	121	339	359	9.3

DBH1STMF

Ticker	Qty ('000)	Total Cost Price (mn)	Total Market Value (mn)	Cost Price Per Share	Market Price Per share	Weight (%)
BXPHARMA	721	65.1	137.9	90	191	13.2
RENATA	91	67.7	127.8	746	1,409	12.2
BATBC	219	102.4	123.3	468	564	11.8
SQURPHARMA	506	67.3	114.8	133	227	11.0
GP	271	78.4	97.3	289	359	9.3

Annotations:

Sharpe ratio is the fund's average return over the risk free rate divided by the standard deviation of the fund. The ratio represents how much additional return an investor has earned relative to per unit of risk of the mutual fund. The metric is calculated based on 52-week data.

Treynor ratio is the fund's average return over the risk free rate divided by the beta of the fund. The ratio represents how much additional compensation an investor receives for assuming market risk. The metric is calculated based on 52-week data.

One Week Excess Return is the fund's NAV return in the latest week over the contemporaneous weekly return of DSEX.

YTD (Year to Date) NAV Return is the fund's NAV return since the beginning of the year to the date of estimation.

Total YTD (Year to Date) NAV Return is the sum of fund's NAV return since the beginning of the year to the date of estimation and the dividend declared for the latest audited fiscal year.

Risk Free Rate is the average of cut off yields of latest auctioned 91-day, 182-day and 364-day Treasury bills, from which a 7-day treasury rate is estimated. This estimation method is flawed, as the impact of liquidity premium cannot be accounted for.

Standard Deviation is a risk measurement of the fund's return volatility. Higher standard deviation is indicative of higher volatility in return and vice versa. The metric is calculated based on 52-week data.

Beta is relative risk measurement of the mutual fund's return to the market (benchmark) return. A beta of 1.0 indicates the return of the fund closely mimics the return of the market. A beta of >1.0 indicates the return of the fund is comparatively more sensitive to volatility compared to the market return, and vice versa. Beta is calculated based on 52-week data.

R-squared is a correlation metric between the mutual fund return and the market (benchmark) return. High R-squared indicates the return performance of the fund can be attributed to the return performance of the market (benchmark), and vice versa. R-square of >0.7 indicates the return of the fund has high correlation with market return, R-square of 0.4 - 0.7 indicates moderate correlation, and R-square of <0.4 indicates weak correlation. R-squared is calculated based on 52-week data.

Tracking Error is volatility metric of excess return relative to market (benchmark) return. A mutual fund with high tracking error and low average return is indicative poor investment performance, and vice versa. The metric is calculated based on 52-week data.

Information ratio is the fund's average excess return over the market (benchmark) return divided by the tracking error of the fund. The ratio represents how much excess return the fund has generated on a consistent basis. A high ratio is indicative of superior and consistent performance of the fund manager, and vice versa. The metric is calculated based on 52-week data.

Alpha is the excess fund return over the sum of expected return and risk free return. Expected return is the minimum compensation that an investor seeks in order to invest in the fund for a given level of risk. Expected return is derived as beta times the market risk premium. Positive alpha indicates the fund manager is capable of delivering superior risk-adjusted return, and vice versa. Alpha is calculated based on 52-week data.

Disclaimer

GENERAL DISCLOSURES

This research report was prepared by UniCap Securities Ltd. (UNICAP), a company authorized to engage in securities activities in Bangladesh.

NOTICE TO RECIPIENTS

This email (including all attachments) is intended only for the named recipient. If you have received this email in error, please delete the email plus any copies of it and immediately notify the sender by return email.

The information contained herein has been prepared and issued by UNICAP to its clients, and all intellectual property relating to the Research vests with UNICAP unless otherwise noted. The Research is provided on an as is basis, without warranty (express or implied).

The Research is based on public data obtained in good faith from sources believed by UNICAP to be reliable, but no representations, guarantees or warranties are made by UNICAP with regard to accuracy, completeness or suitability of the data and under no circumstances will any of UNICAP, its officers, representatives, associates or agents be liable for any loss or damage, whether direct, incidental or consequential, caused by reliance on or use of the content. UNICAP has not performed any independent review or due diligence of publicly available information. The opinions and estimates contained herein reflect the current judgment of the analyst(s) on the date of this Research and are subject to change without notice. The opinions do not necessarily correspond to the opinions of UNICAP. UNICAP does not have an obligation to update, modify or/(and) amend this Research or otherwise notify a reader thereof in the event that any matter stated herein, or any opinion, projection, forecast or/(and) estimate set forth herein, changes or subsequently becomes inaccurate.

This Research is not an offer to sell or the solicitation of an offer to buy any security in any jurisdiction where such an offer or solicitation would be illegal. It is intended to be distributed in its entirety. It does not constitute a personal recommendation or takes into account the particular investment objectives, financial situations, or needs of individual investors. Investors should consider whether any advice or recommendation in this Research is suitable for their particular circumstances and, if appropriate, seek professional advice, including tax advice and ensure they obtain, read and understand any applicable offer document. The price and value of investments referred to herein and the income from them may fluctuate. Past performance is not an indicator or guarantee of future returns, and a loss of original capital may occur. Fluctuations in exchange rates could have adverse effects on the value or price of, or income derived from, certain investments.

Our salespeople, traders, and other professionals may provide oral or written market commentary or trading strategies to our clients and principal trading desks that reflect opinions that are contrary to the opinions expressed in this Research. Our asset management area, principal trading desks and investing businesses may make investment decisions that are inconsistent with the recommendations or views expressed in this Research. Neither UNICAP nor its representatives, will receive (directly or indirectly) any commission, fee, benefit or advantage, pecuniary or otherwise, nor be influenced, either directly or indirectly, in connection with the making of any recommendation or preparation of any Research.

The analysts named in this report may have from time to time discussed with our clients, including UNICAP salespersons and traders, or may discuss in this report, trading strategies that reference catalysts or events that may have a near-term impact on the market price of the equity securities discussed in this report, which impact may be directionally counter to the analysts' published price target expectations for such stocks. Any such trading strategies are distinct from and do not affect the analysts' fundamental equity rating for such stocks, which rating reflects a stock's return potential relative to its coverage group as described herein.

Any prices provided herein (other than those that are identified as being historical) are indicative only, and do not represent firm quotes as to either size or price. The past performance of financial instruments is not indicative of future results. No assurance can be given that any financial instrument or issuer described herein would yield favorable investment results. Any forecasts or price targets shown for companies and/or securities discussed in this Research may not be achieved due to multiple risk factors including without limitation market volatility, sector volatility, corporate actions, the unavailability of complete and accurate information and/or the subsequent transpiration that underlying assumptions made by UNICAP or by other sources relied upon in the Research were inapposite.

UNICAP may provide hyperlinks to websites of entities mentioned in this Research, however the inclusion of a link does not imply that UNICAP endorses, recommends or approves any material on the linked page or accessible from it. UNICAP does not accept responsibility whatsoever for any such material, nor for any consequences of its use.

This document is for the use of the addressees only and may not be reproduced, redistributed or passed on to any other person or published, in whole or in part, for any purpose, without the prior, written consent of UNICAP. Persons into whose possession this document may come are required to inform themselves about and to observe such restrictions. By accepting this document, a recipient hereof agrees to be bound by the foregoing limitations.

Contact Us

Institutional & International Sales & Trading

Kamal Krishna Saha, CFA, CMT	Head of Institutional Sales & Trading	kamal@unicap-securities.com	+880 1701 220 109
Sabina Yesmin	Relationship Manager, Institutional Sales	sabina@unicap-securities.com	+880 1755 694 038
Md. Mustafa Kamal	Manager, Institutional Trading	mustafa@unicap-securities.com	+880 1755 694 035

Research Team

Fahim Hassan	Research Analyst	fahim@unicap-securities.com	+880 1701 220 128
--------------	------------------	-----------------------------	-------------------

BI Development Team

Tanveer Al Jamee	Executive	tanveer@unicap-securities.com	+880 1701 220 126
------------------	-----------	-------------------------------	-------------------

Find Us

Corporate Office

A.A Bhaban (9th Floor)
23 Motijheel C/A
Dhaka- 1000
Tel: +880 (2) 9515952 –53, +880 (2) 9515955
Fax: +880 (2) 9514923

Gulshan Office

Richmond Concord (6th Floor)
68 Gulshan Avenue
Gulshan- 1, Dhaka- 1212.
Tel: +880 (2) 8820366, 8828196
Fax: +880 (2) 8825740.

Sonargaon Road Branch

Noor Tower (4th Floor)
73 Sonargaon Road
Dhaka- 1205.
Tel: +880 (2) 9632161
Fax: +880 (2) 9632163

Chittagong Branch

Ayub Trade Centre (7th Floor)
1269/B Sk. Mujib Road
Agrabad, Chittagong- 4100.
Tel: +880 (31) 2513558 – 59
Fax: +880 (31) 2513356

Sylhet Branch

J.R Tower (2nd Floor), 23 Abash, Jail Road,
Sylhet-3100
Tel: +880 (821) 728440 – 41
Fax: +880 (821) 728437.

For any query, please contact us at:

research@unicap-securities.com